



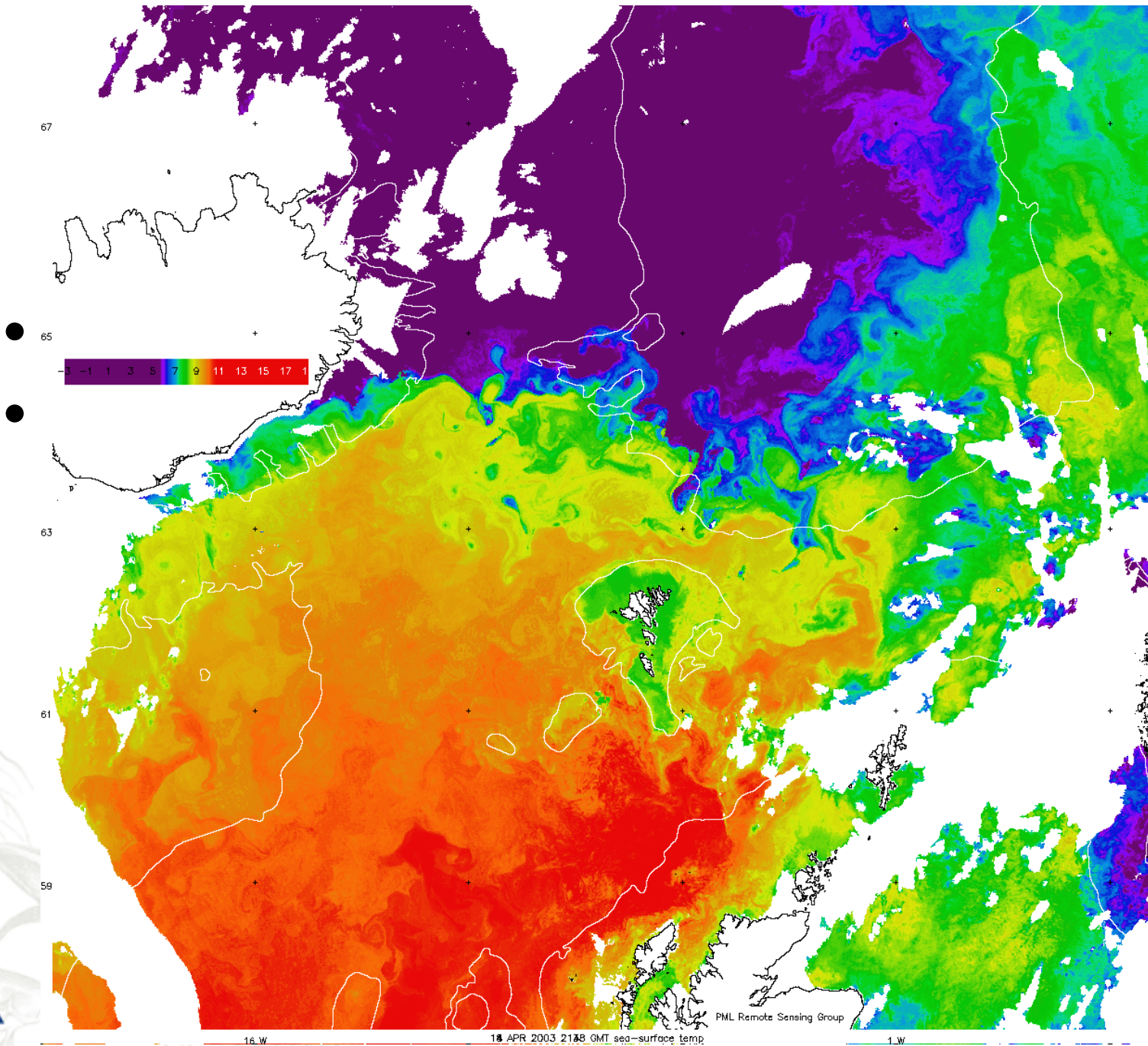
Crossover and mixing in the NwAC

Henrik Søliland,

Institute of Marine Research/Bjerknes Centre for Climate Research

Tom Rossby og Mark Prater

University of Rhode Island



PML Remote Sensing Group



RAFOS-bøyesystem

- **RAFOS-bøye**

Undervanns-drivbøye

Akustisk posisjonert

2 posisjoner per dag

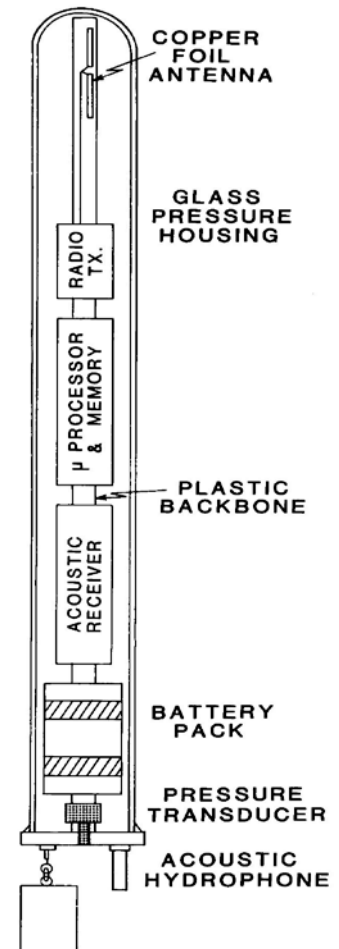
4 temperatur og trykk per dag

Argos sender

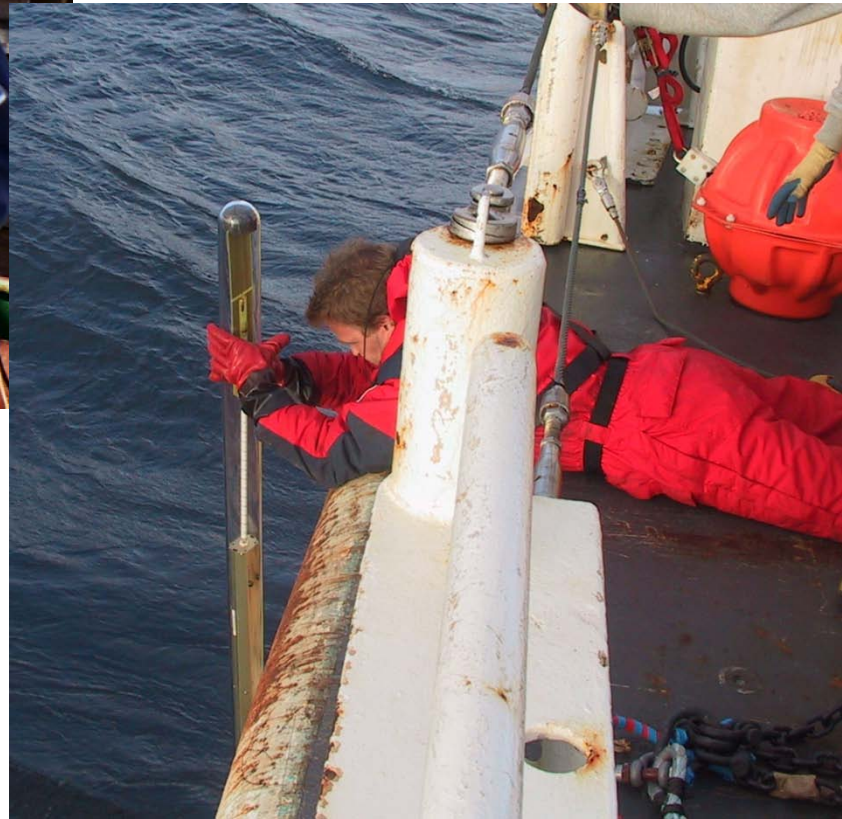
- **Lydkilde**

Forankret

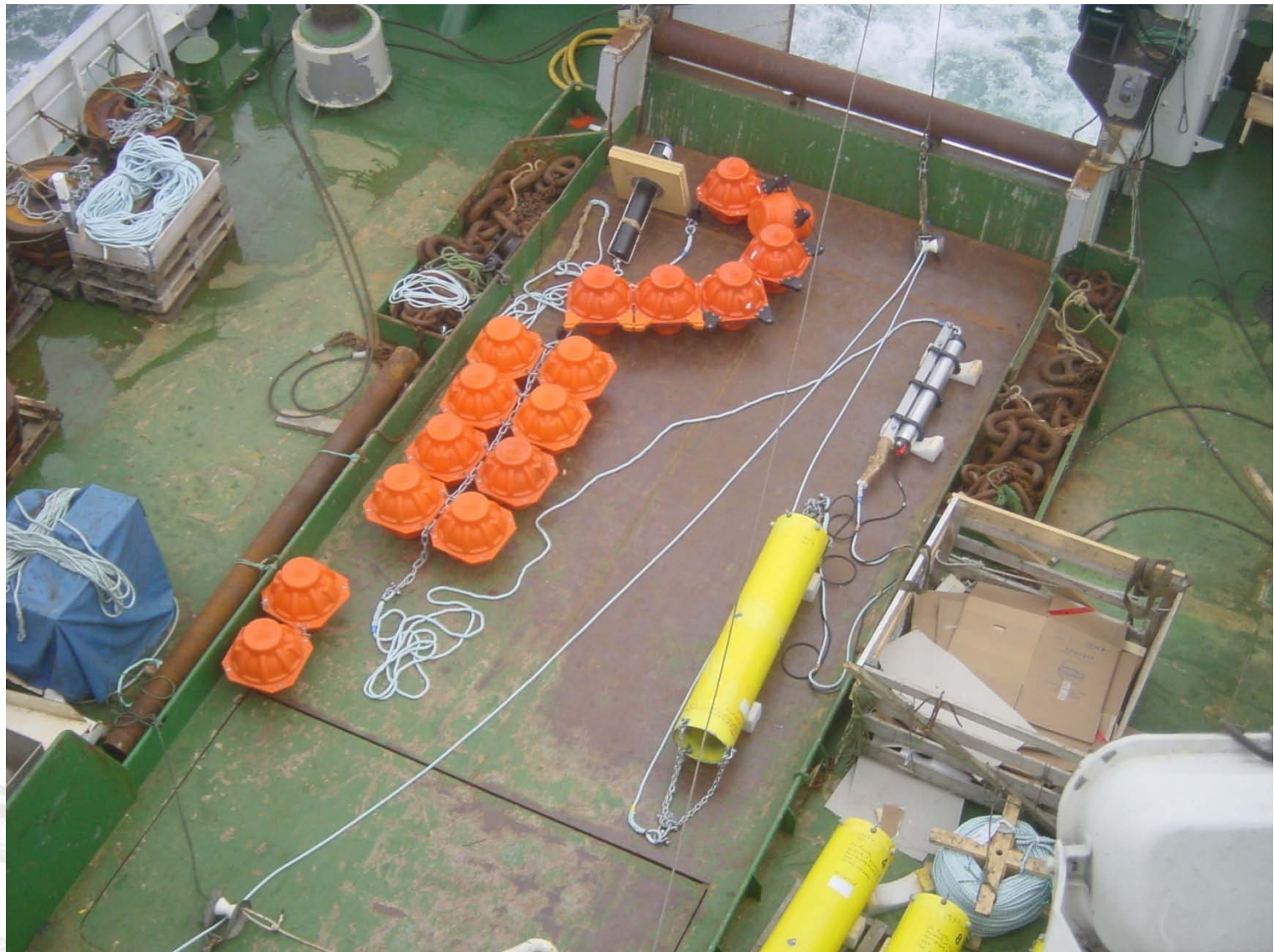
260Hz FM-signal



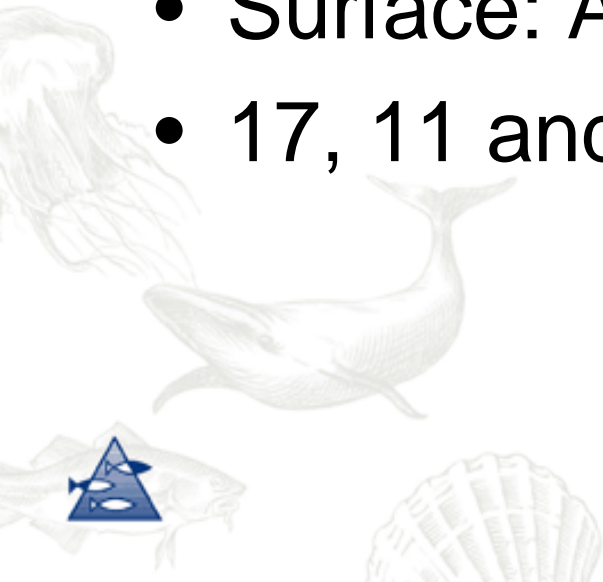
RAFOS-bøye

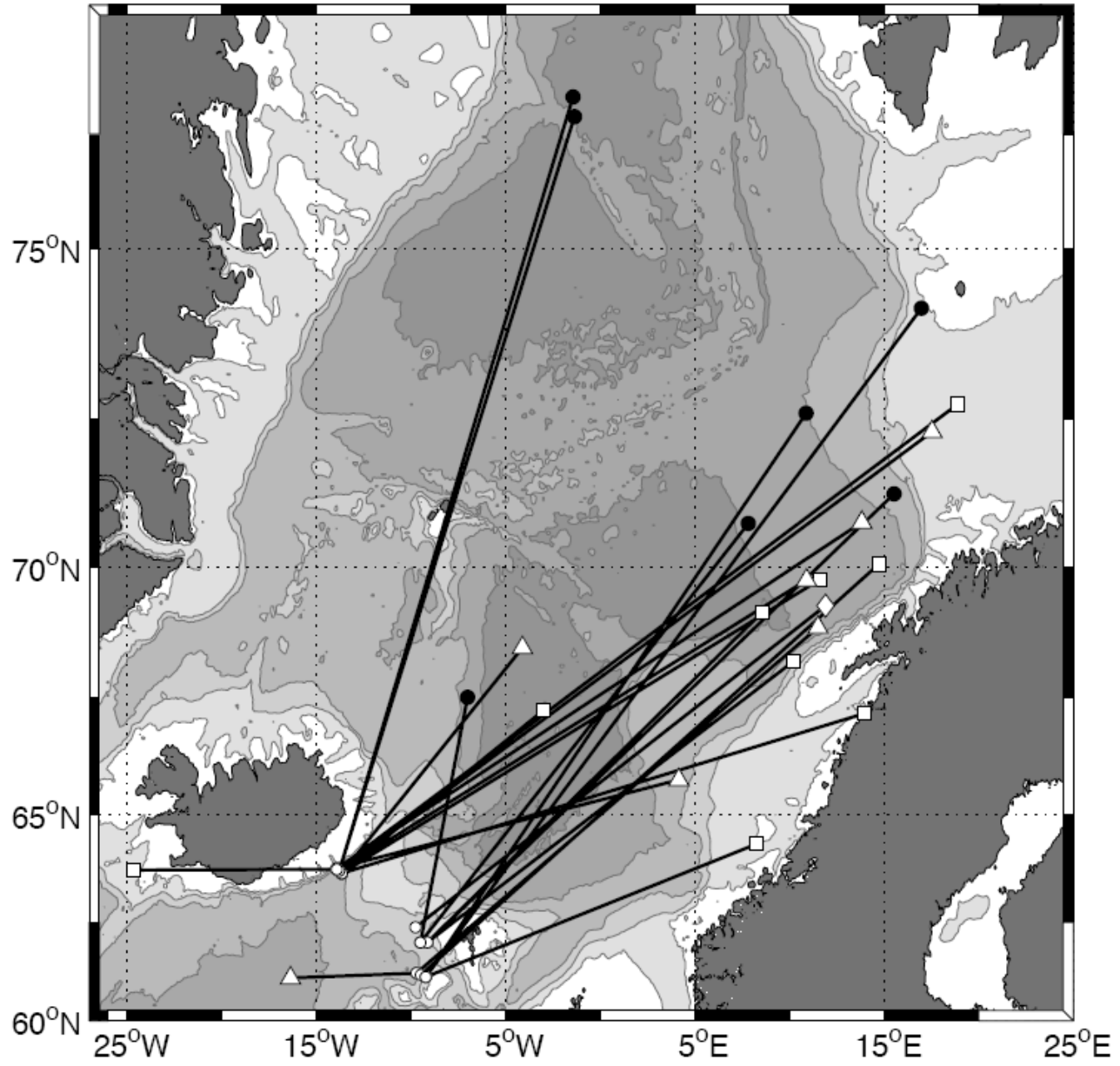


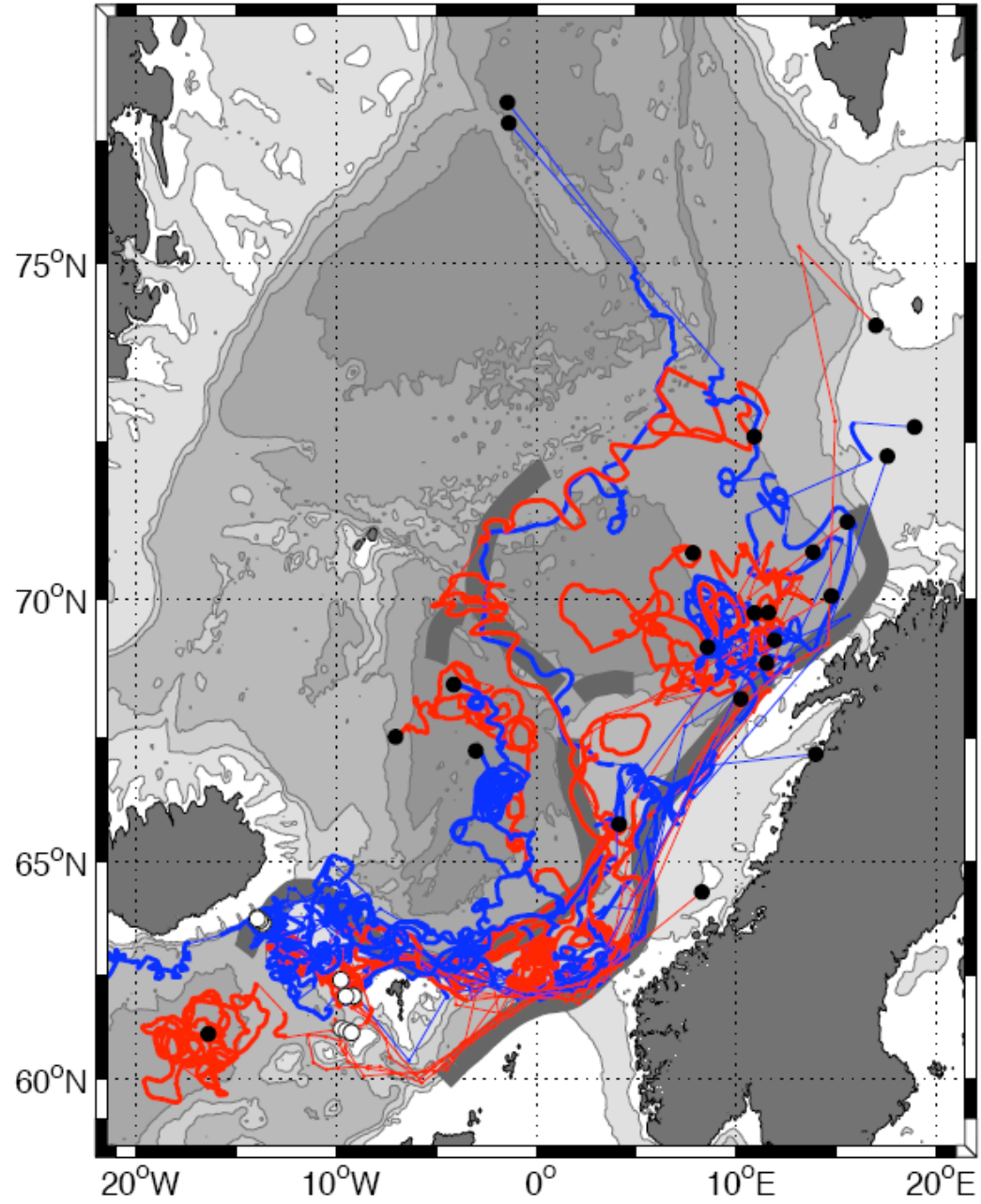
Lydkilde m/forankring

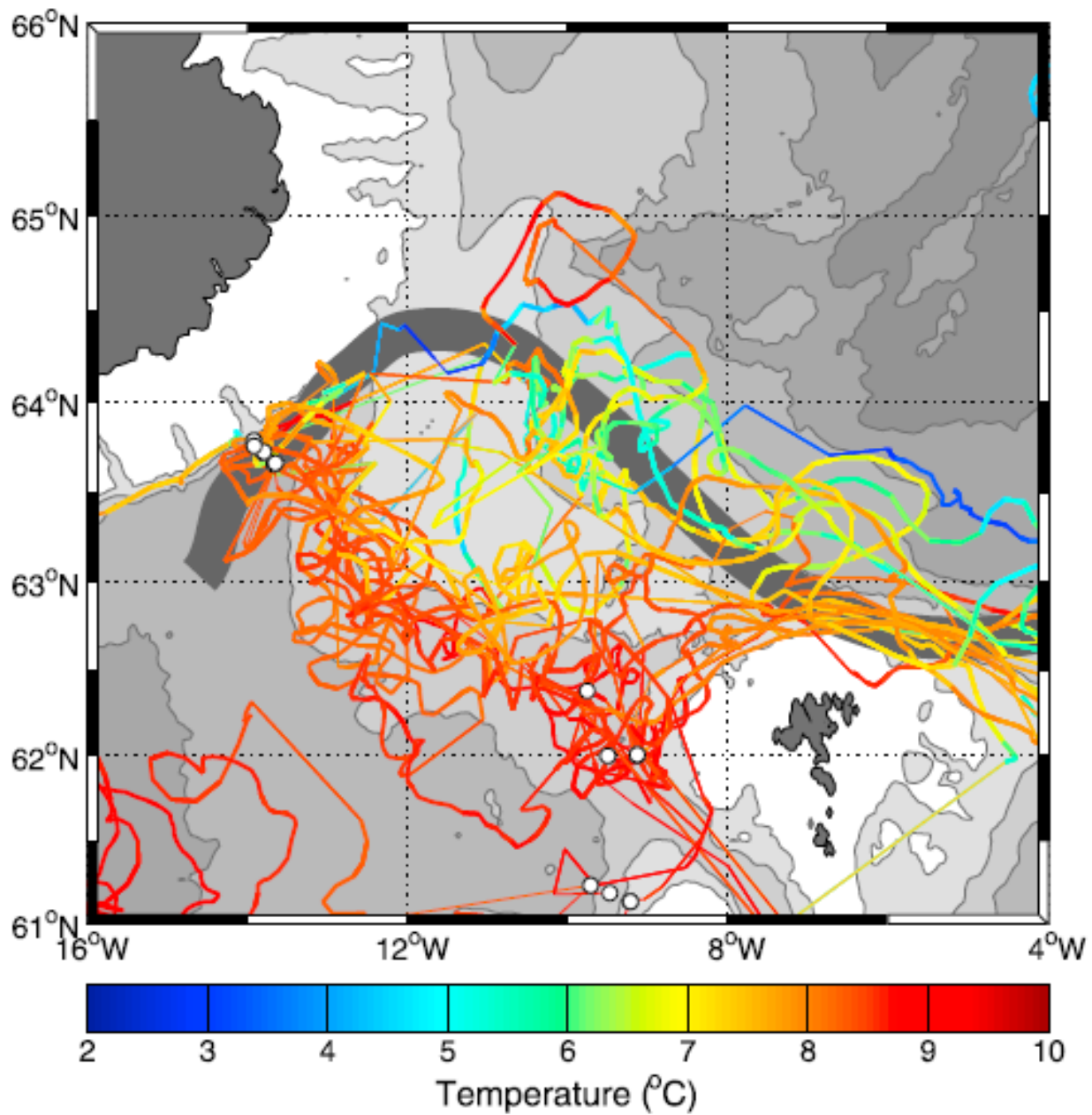


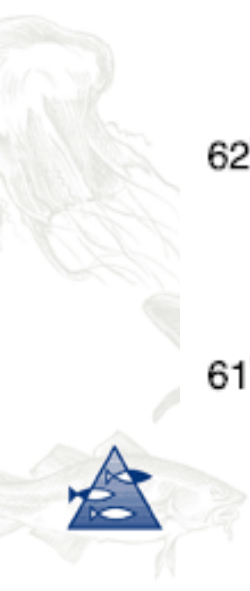
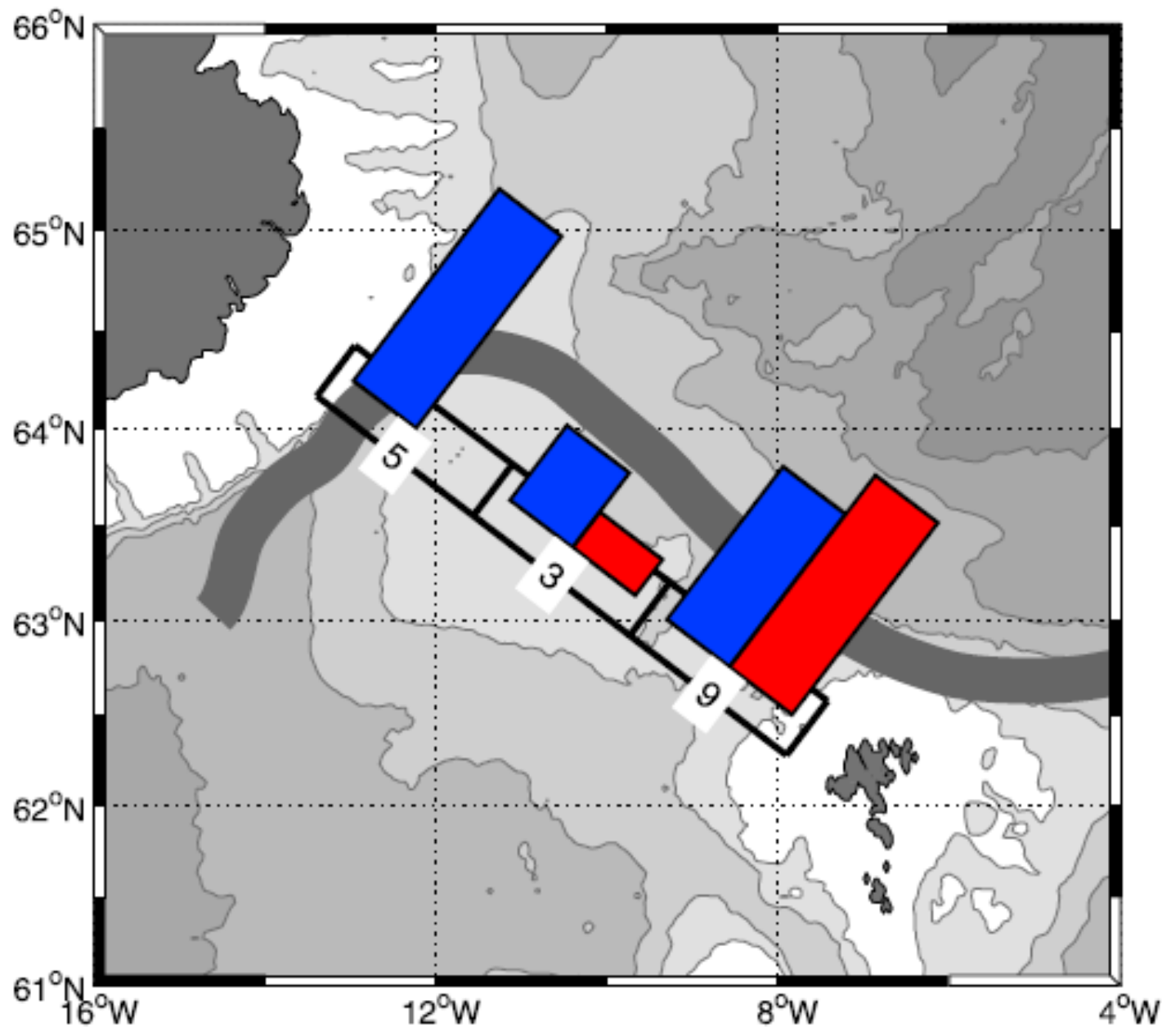
- Atlantic Water
- Deployment depth 250m
- 24 trajectories
- Deployments: Fall 2004, spring 2005 and fall 2005
- Surface: April 2006
- 17, 11 and 6 months missions

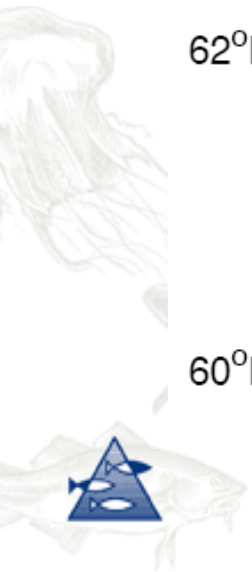
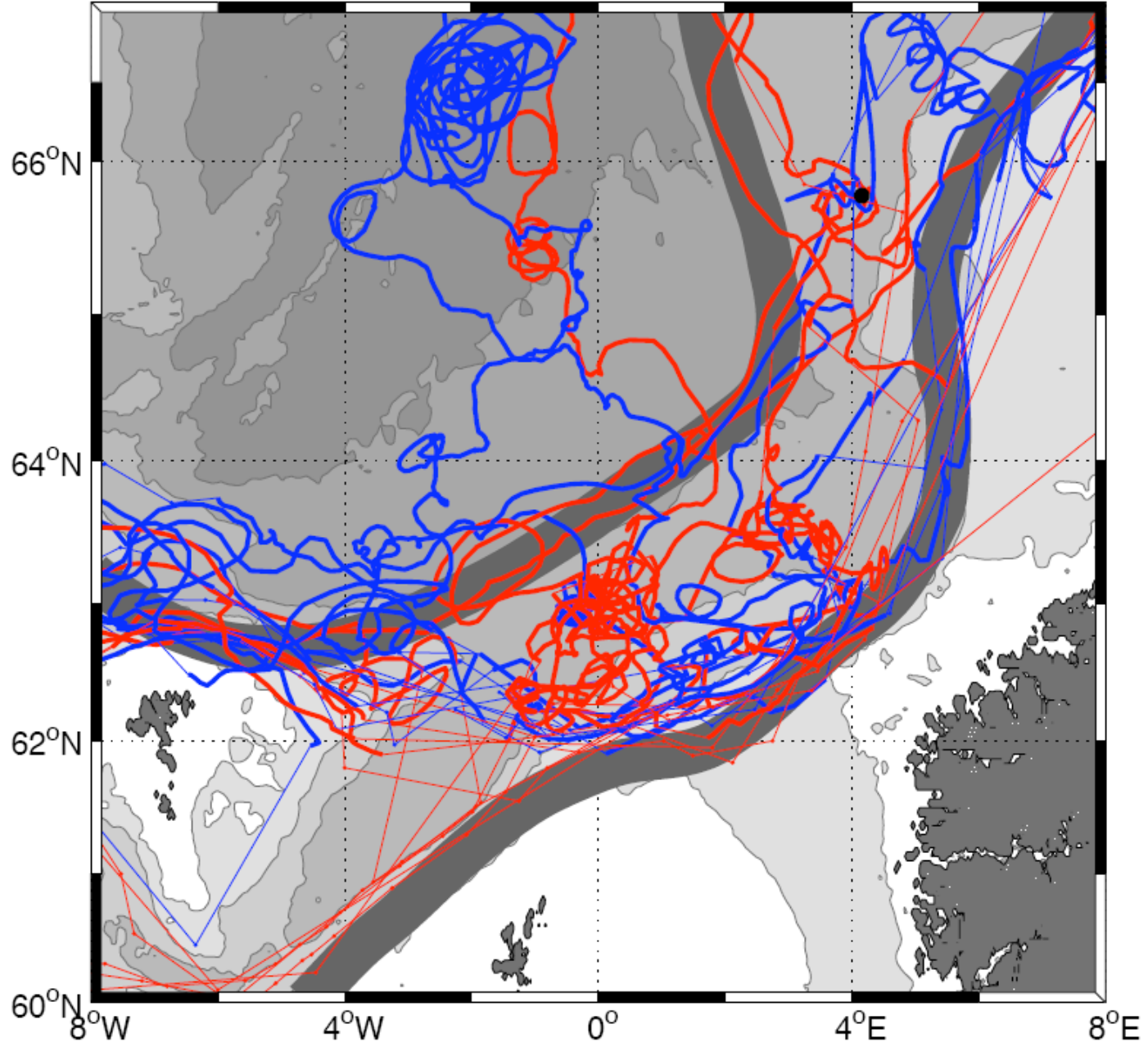


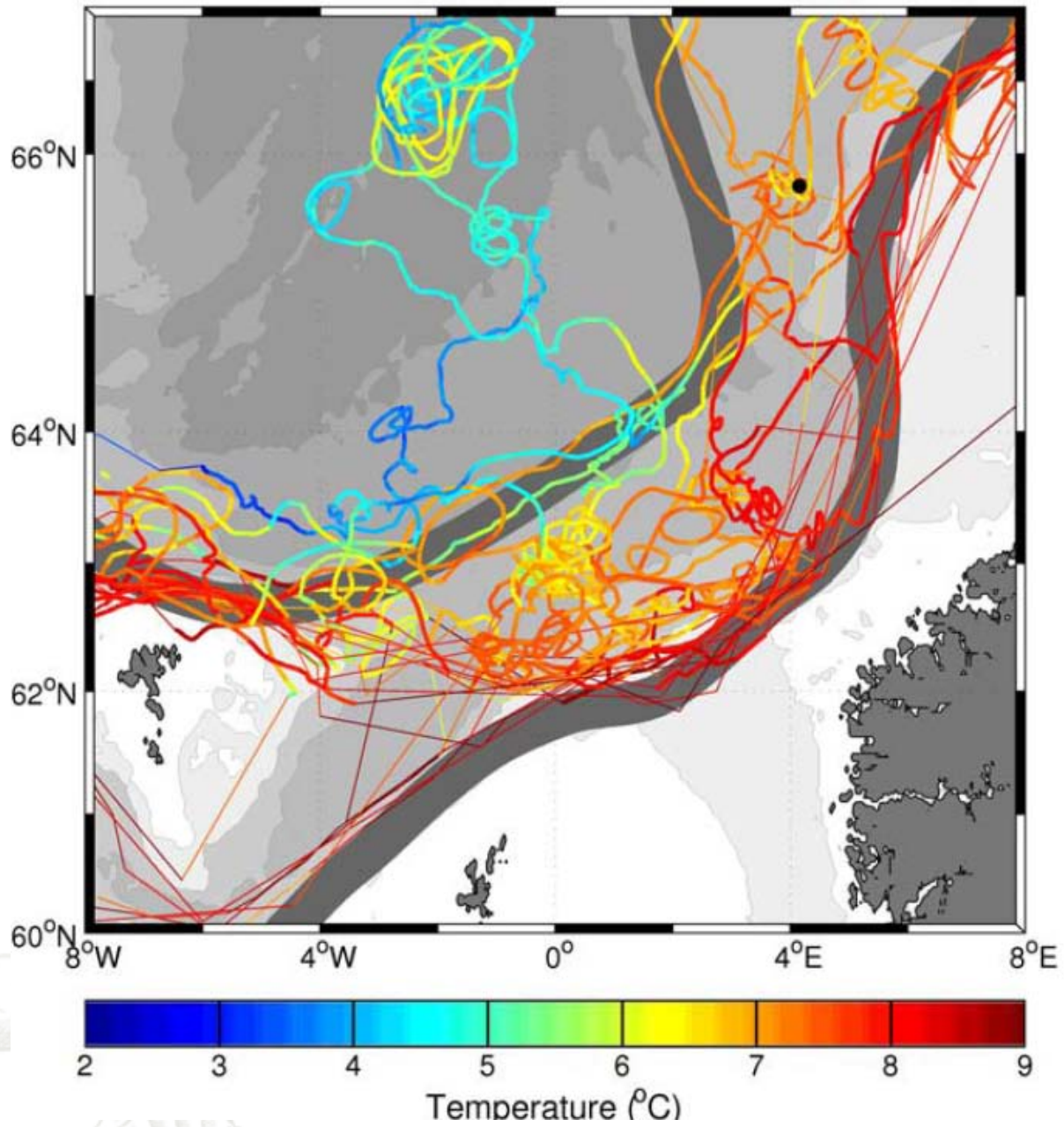


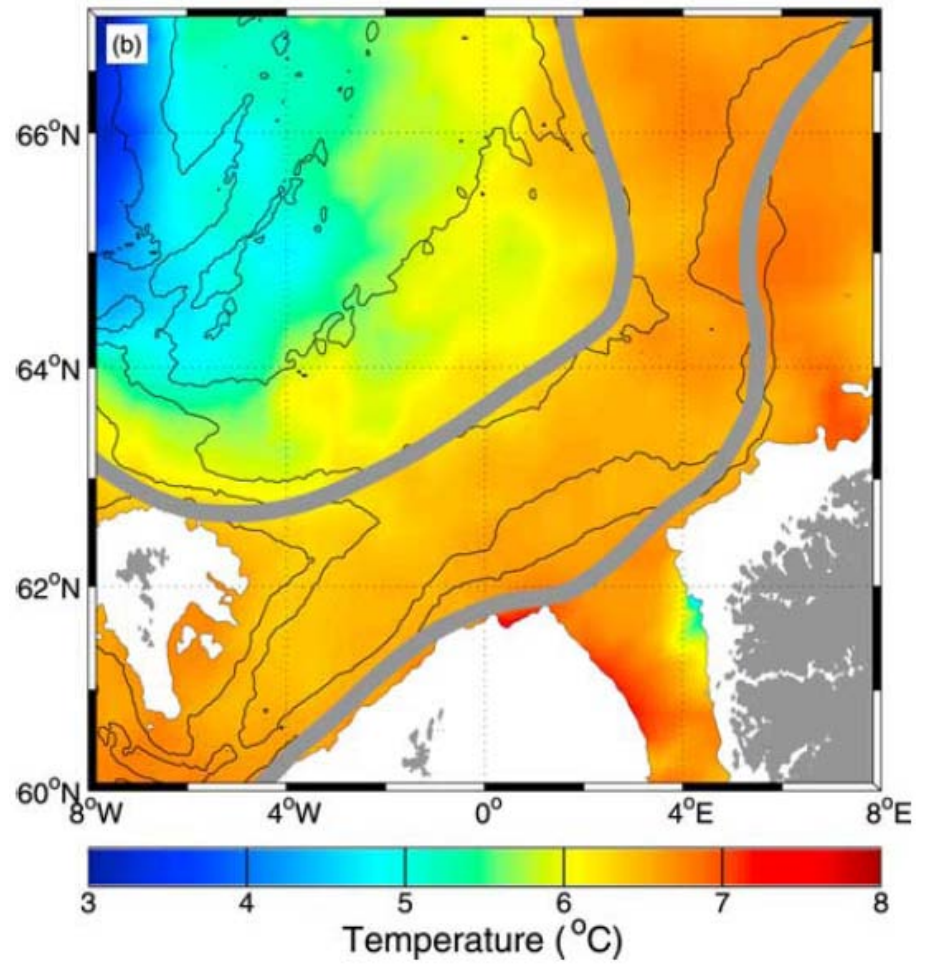
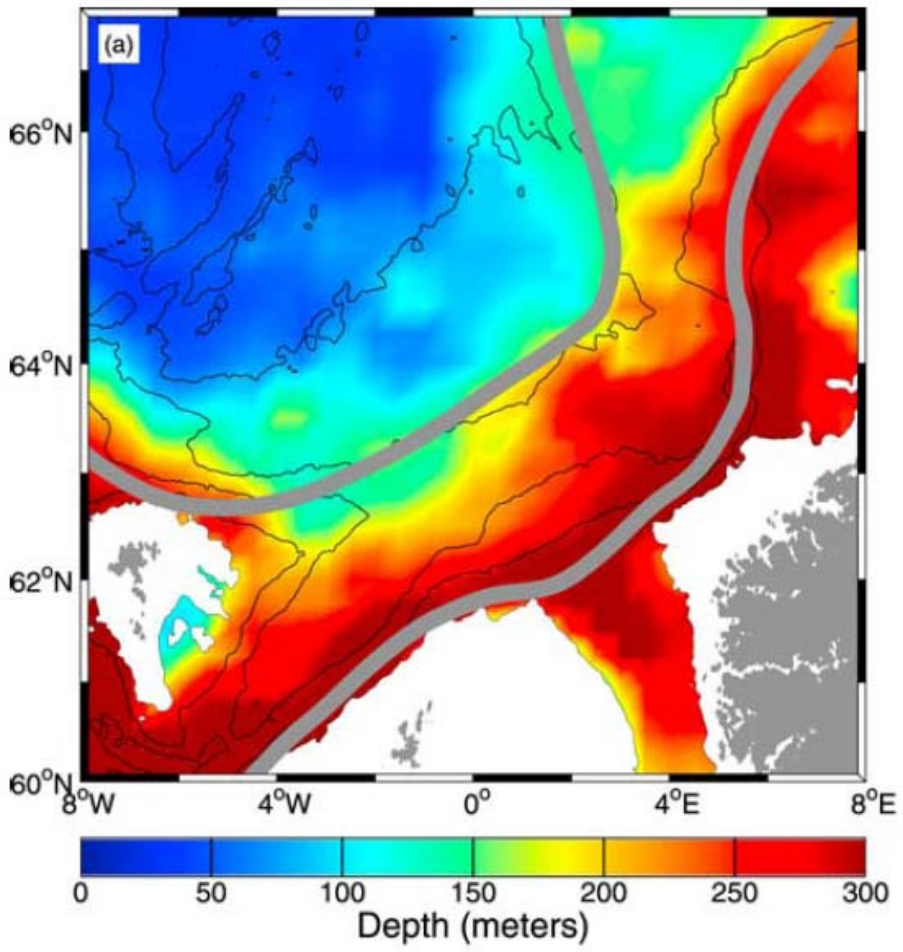


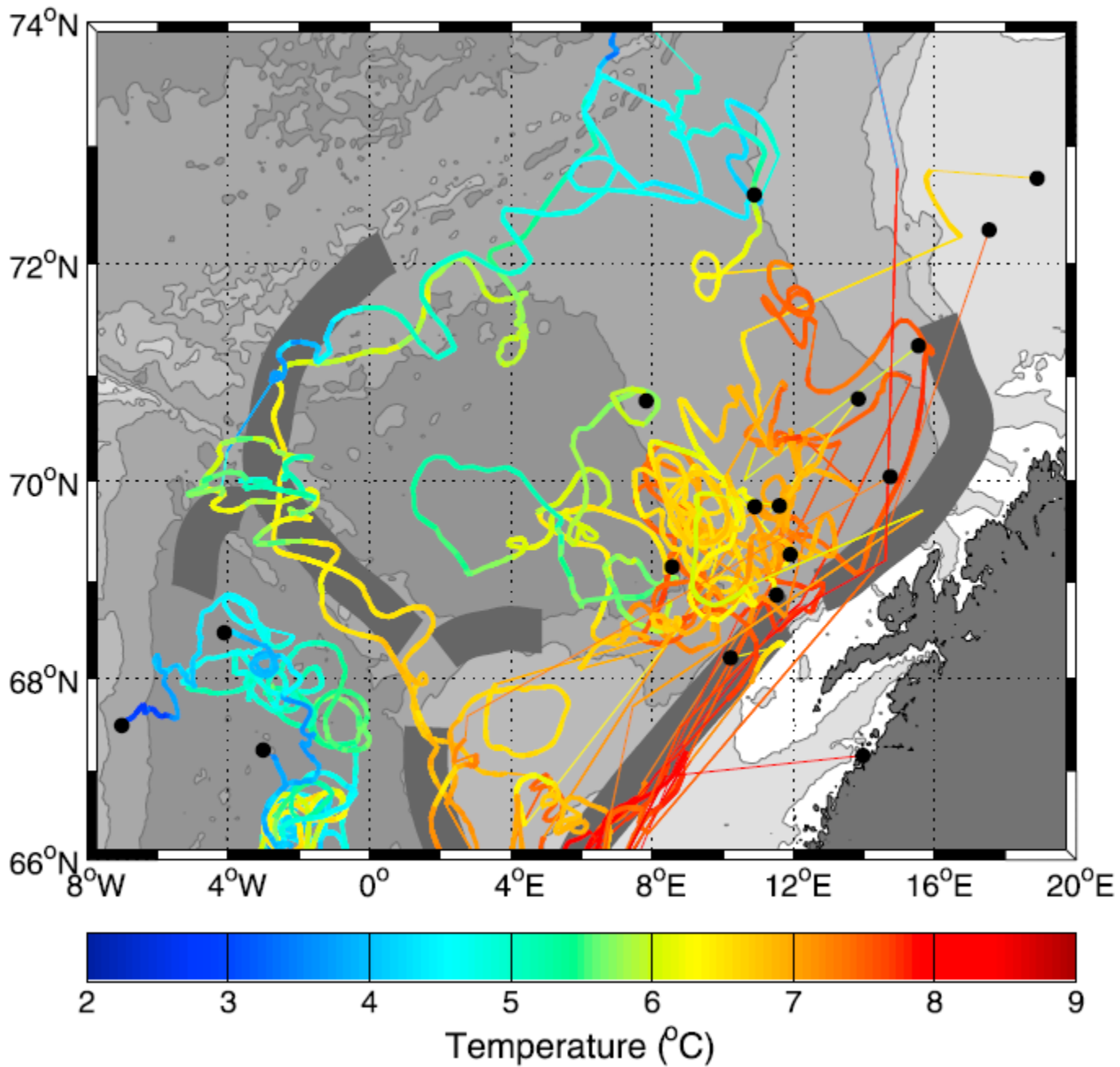


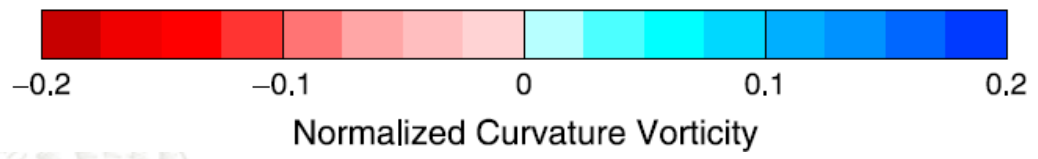
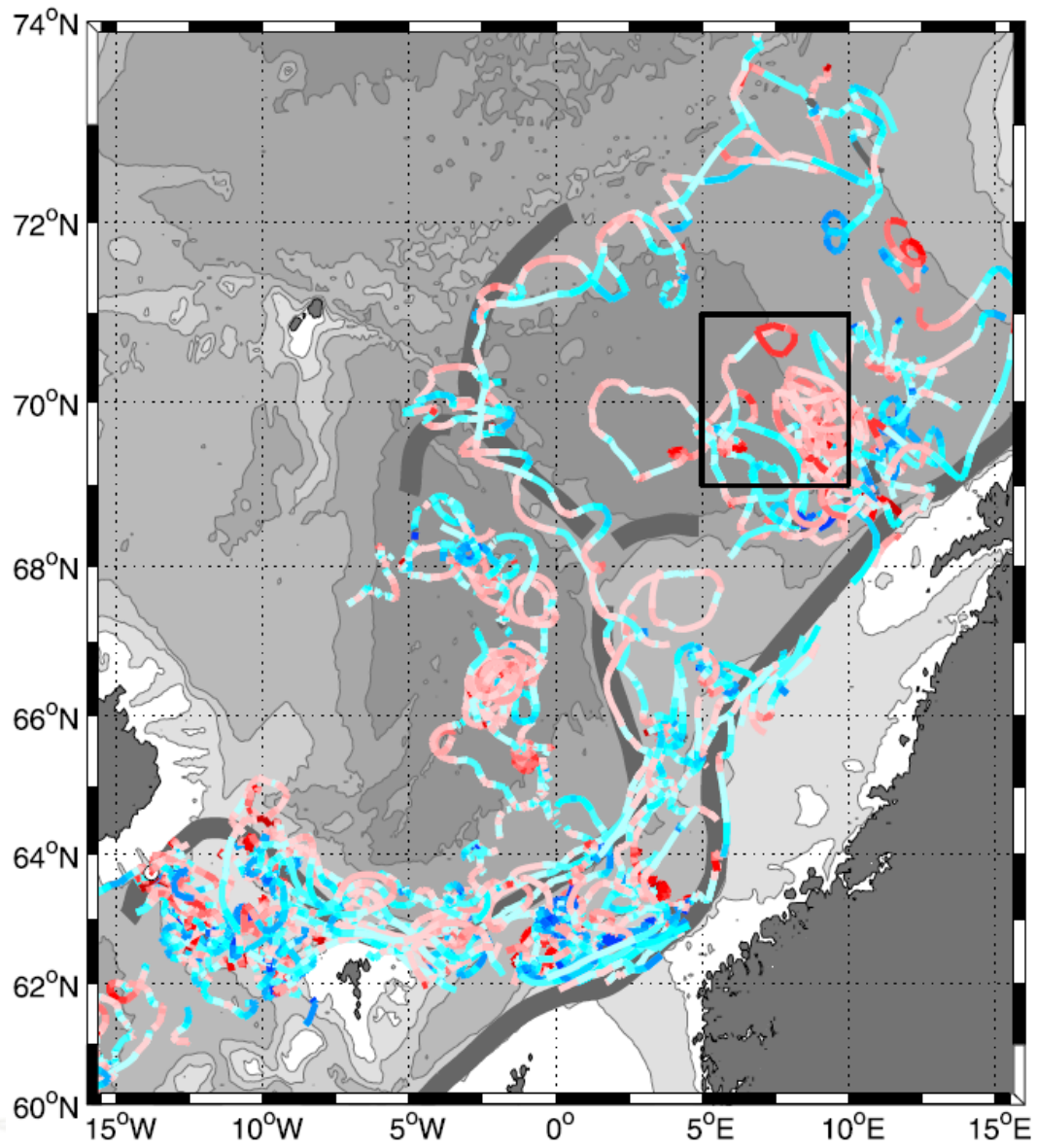


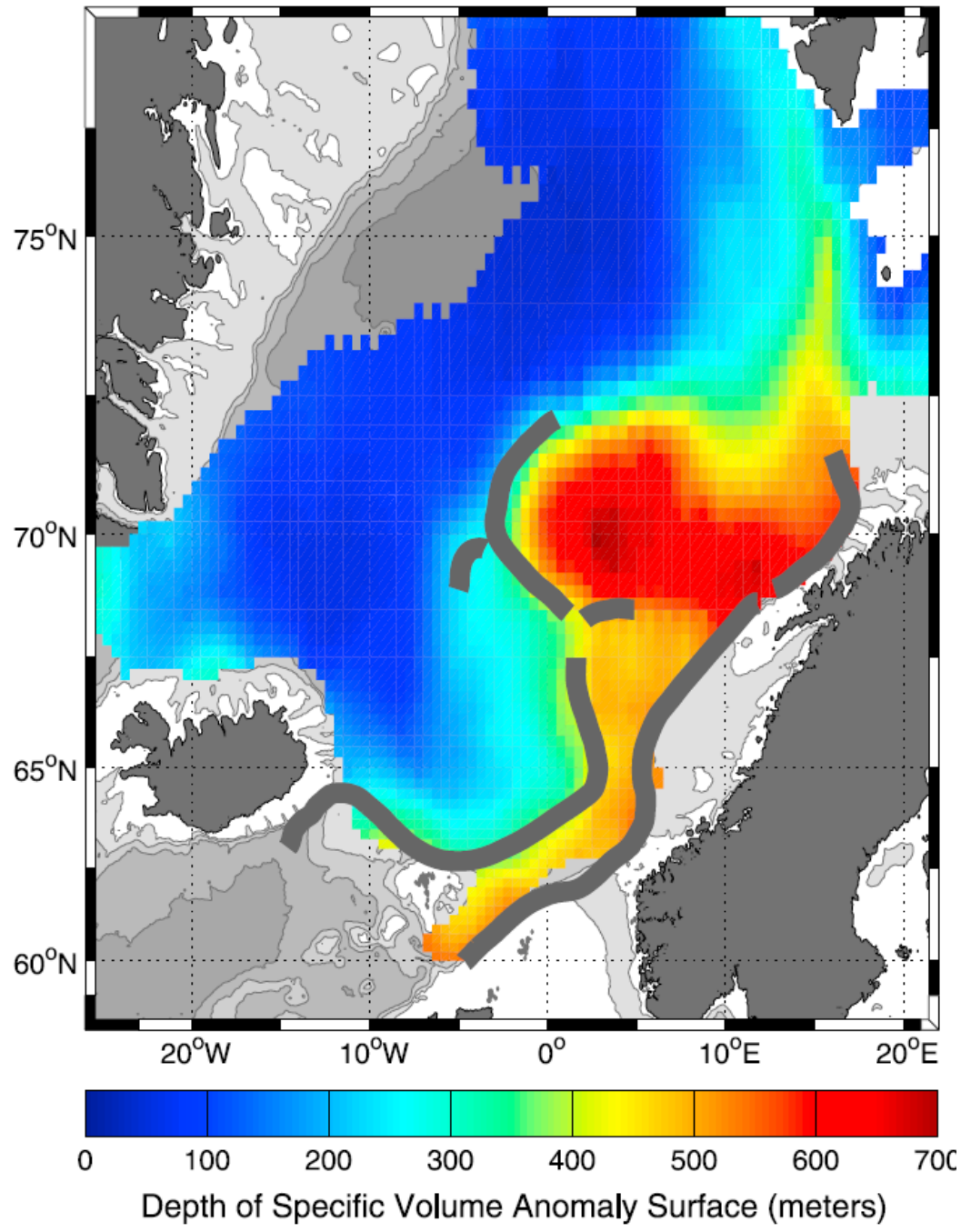




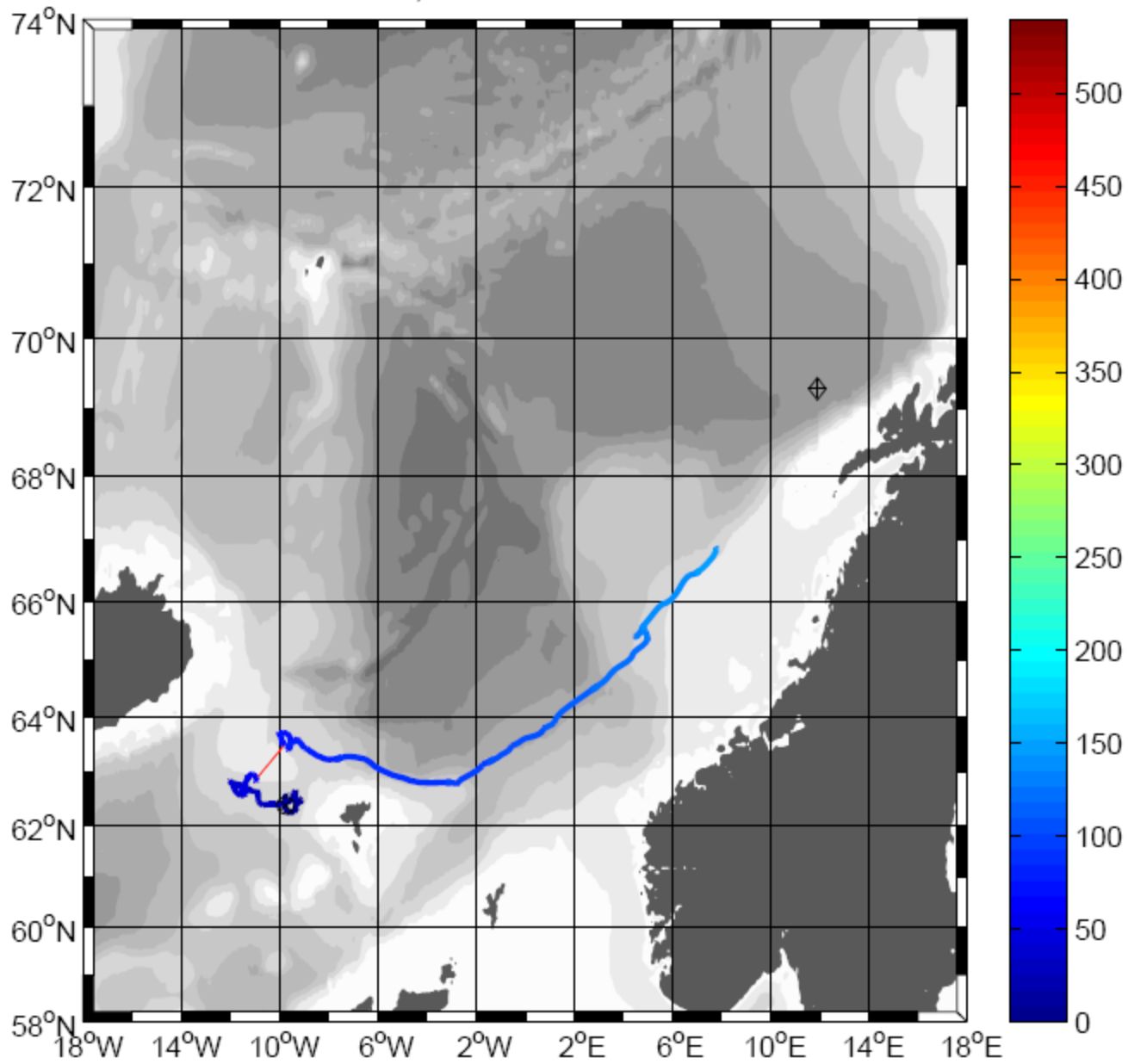




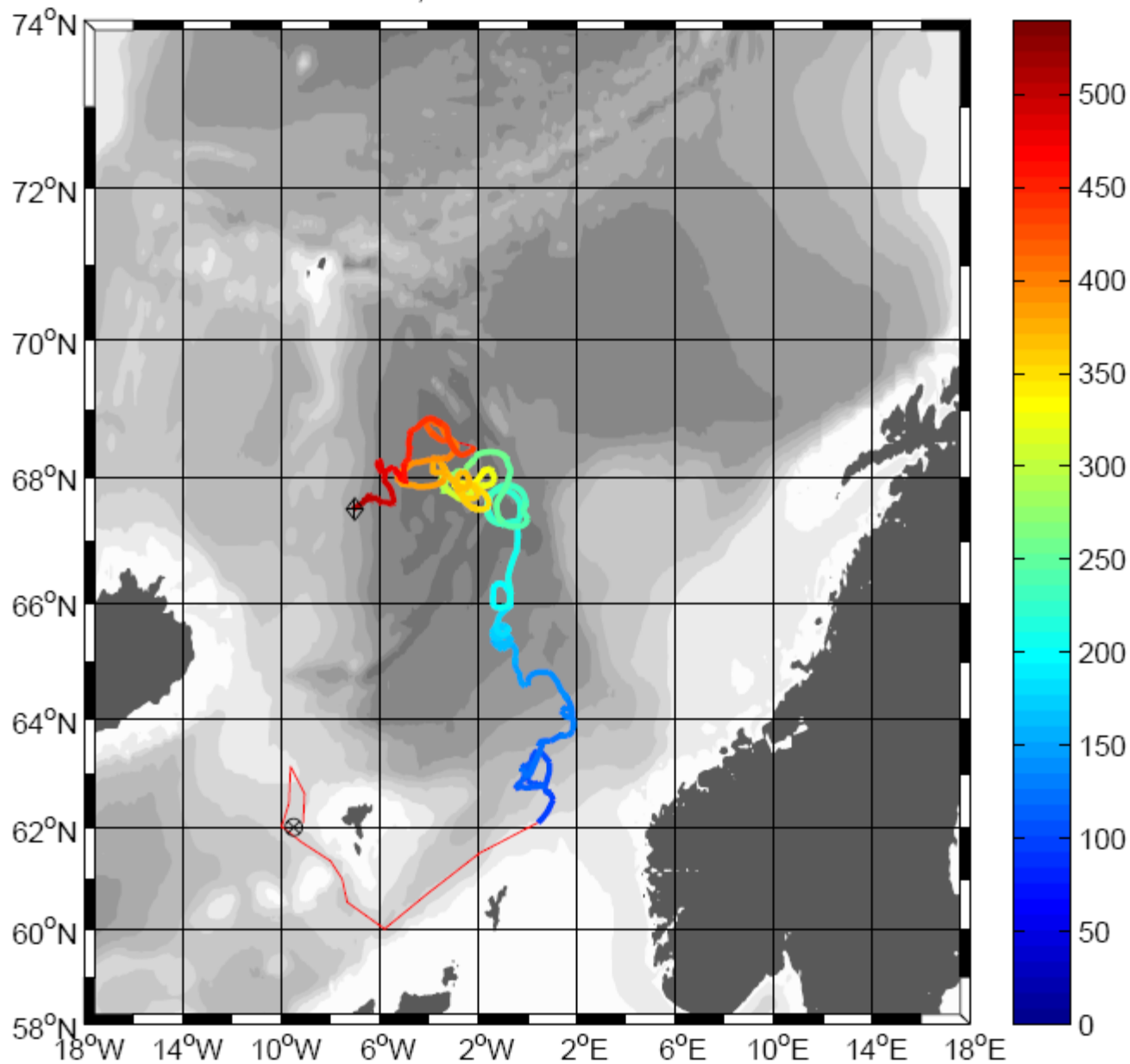




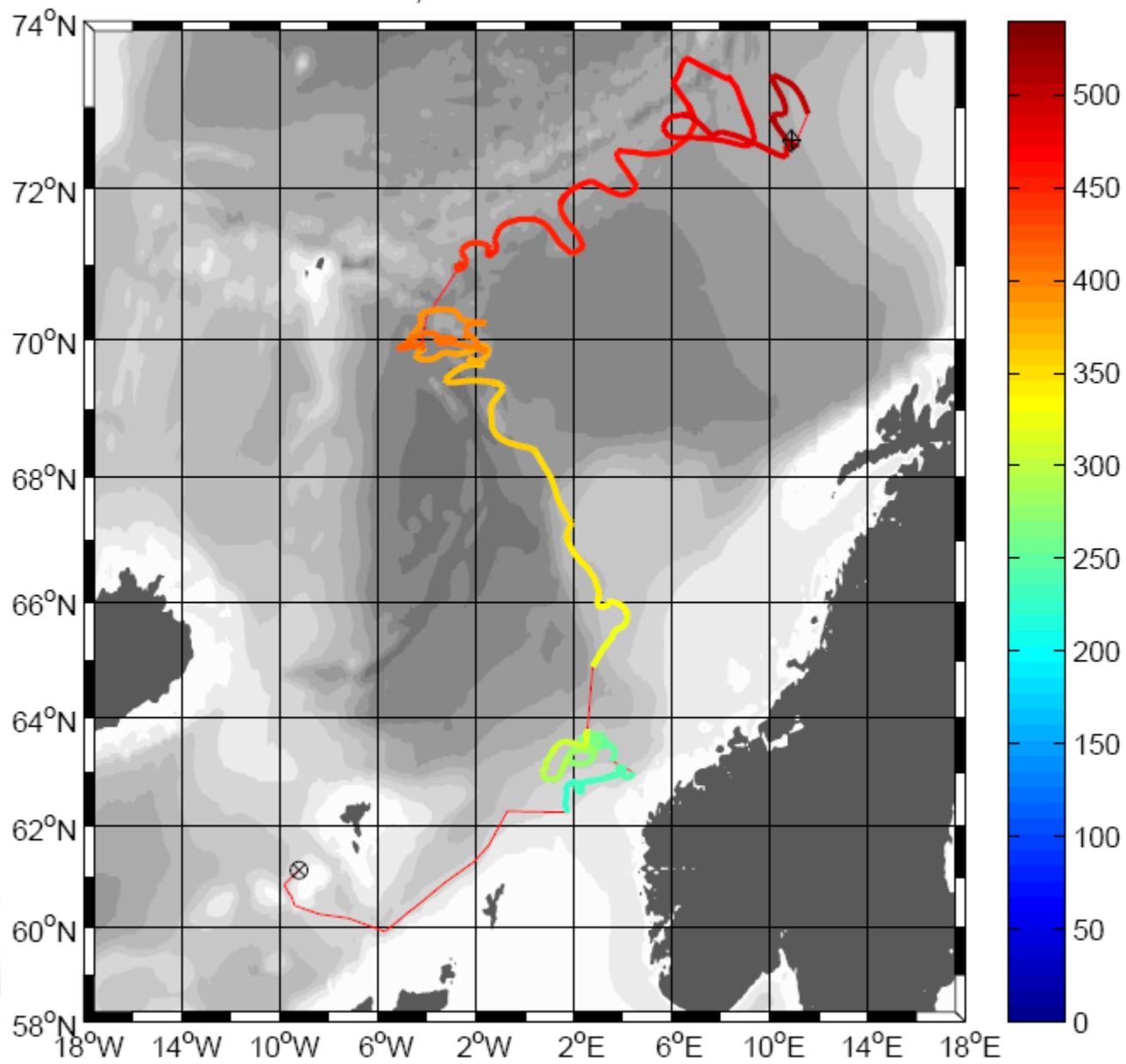
DAY; RAFOS float no.530



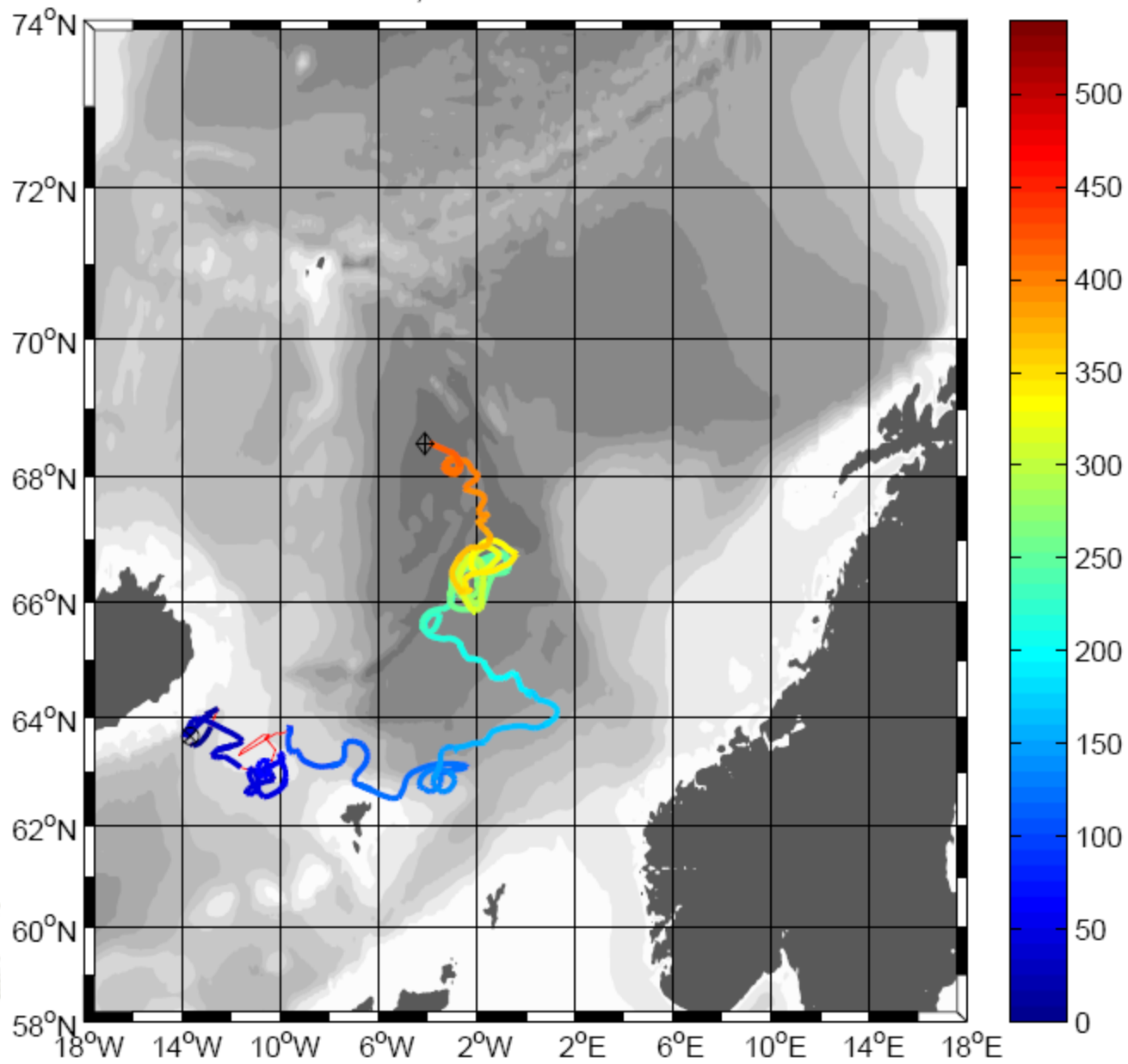
DAY; RAFOS float no.380



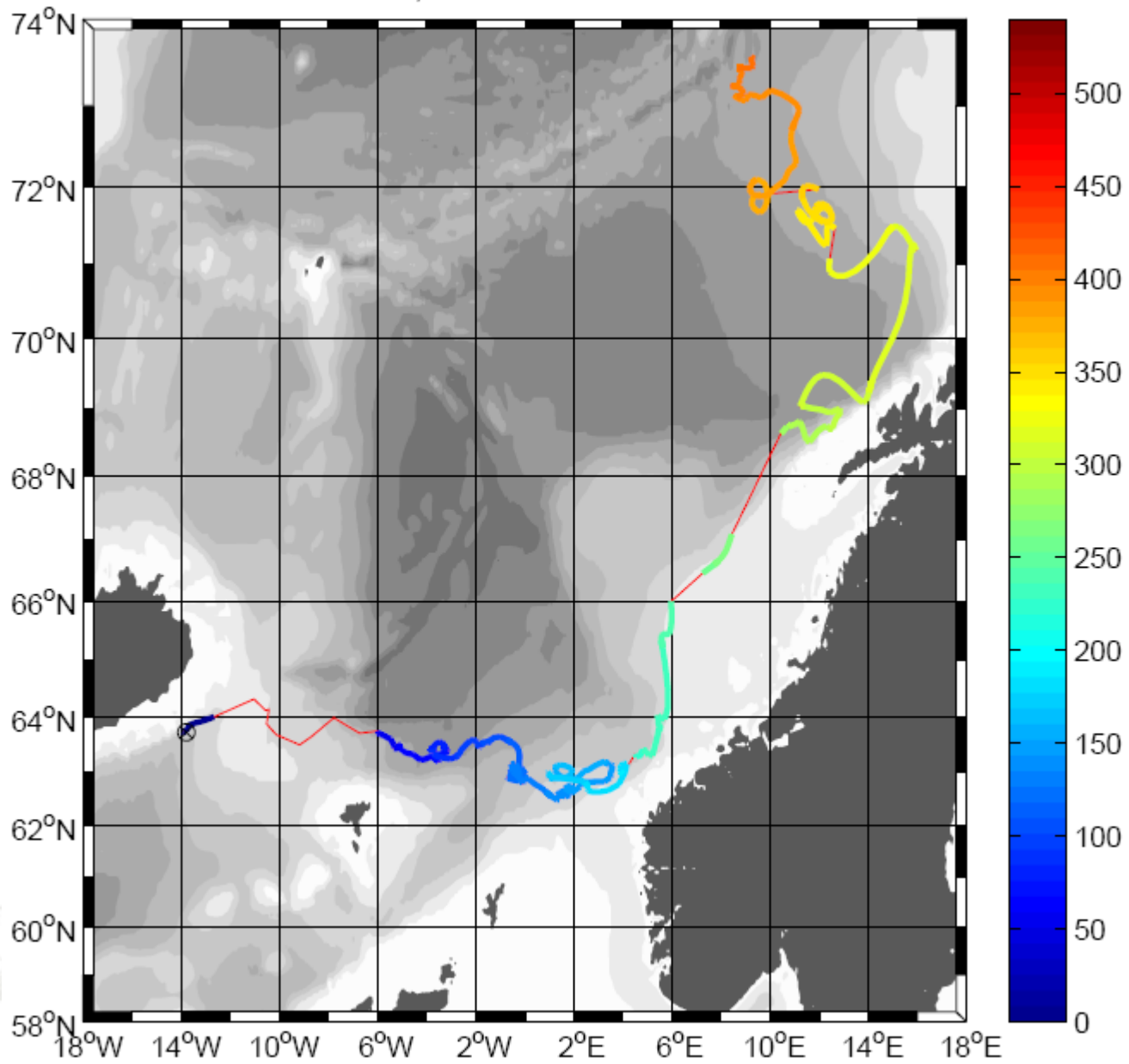
DAY; RAFOS float no.381



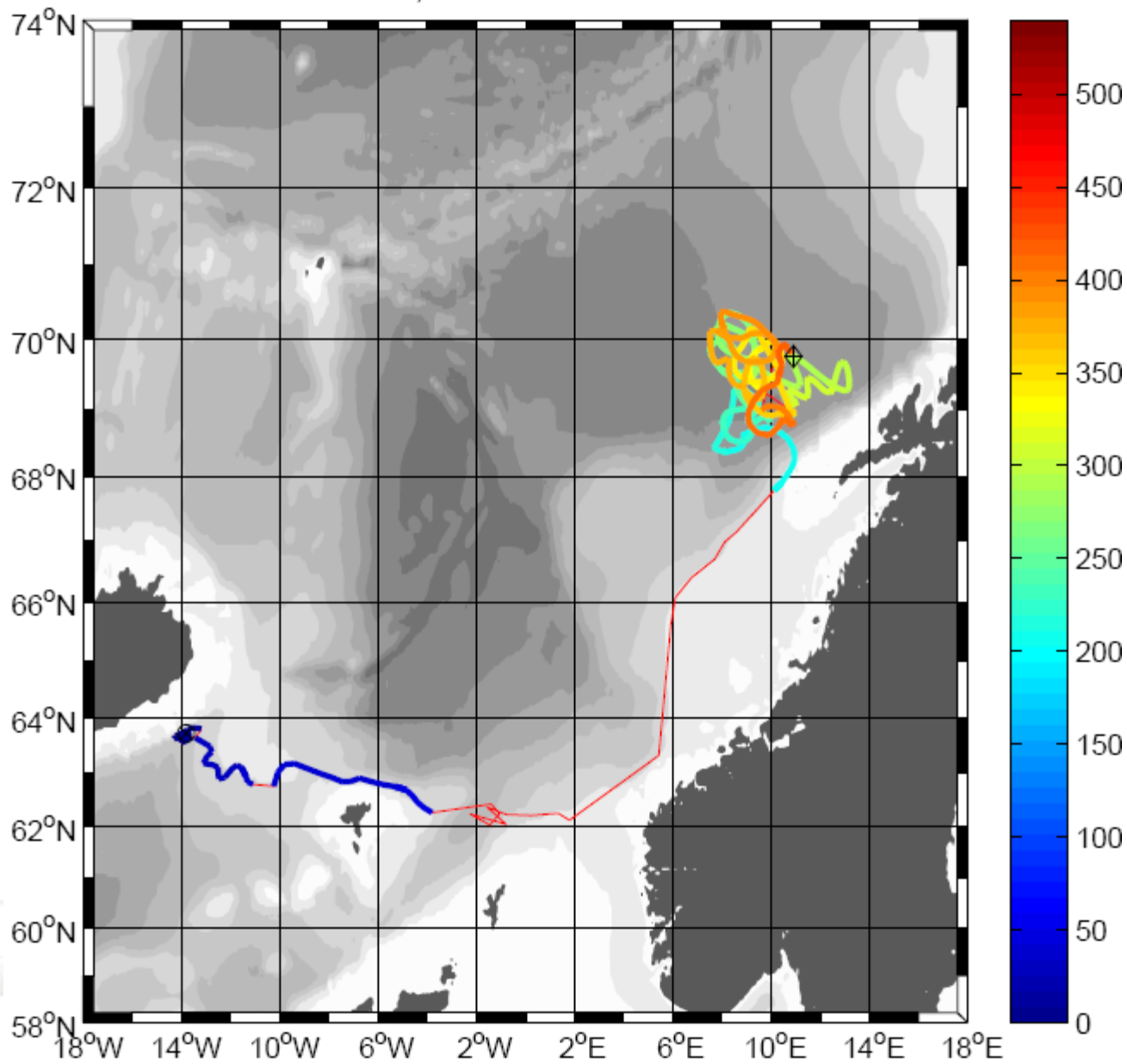
DAY; RAFOS float no.408

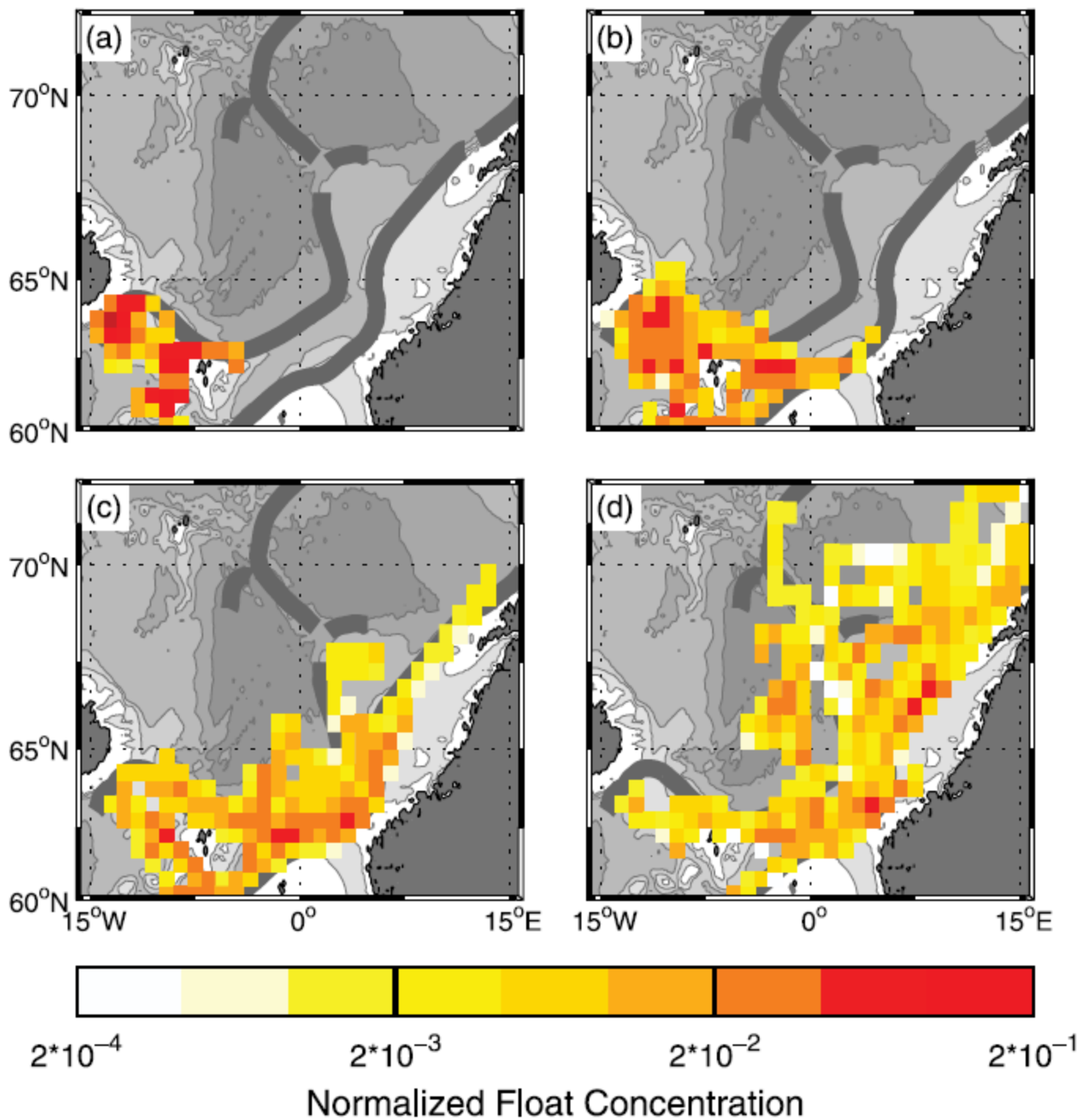


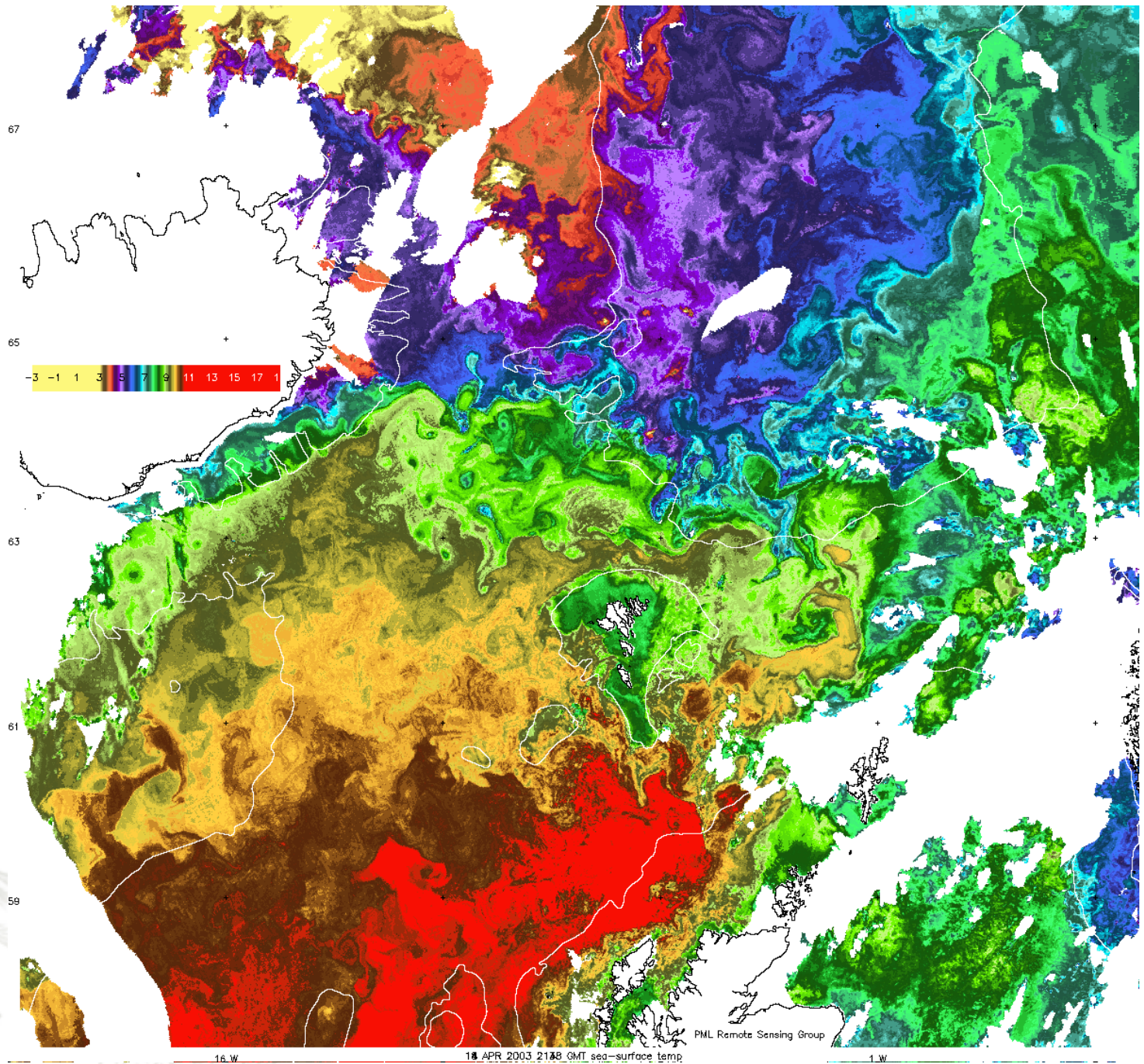
DAY; RAFOS float no.425



DAY; RAFOS float no.415







All (22) (Speed)

